



See Pg 25

See Pg 54

See Pg 18



Main	Alt	ORV
State Hwy	County Rd	Other Rd

0 1 2 3 Miles

85.6° W

85.5° W

85.4° W

See Pg 52



46.5° N

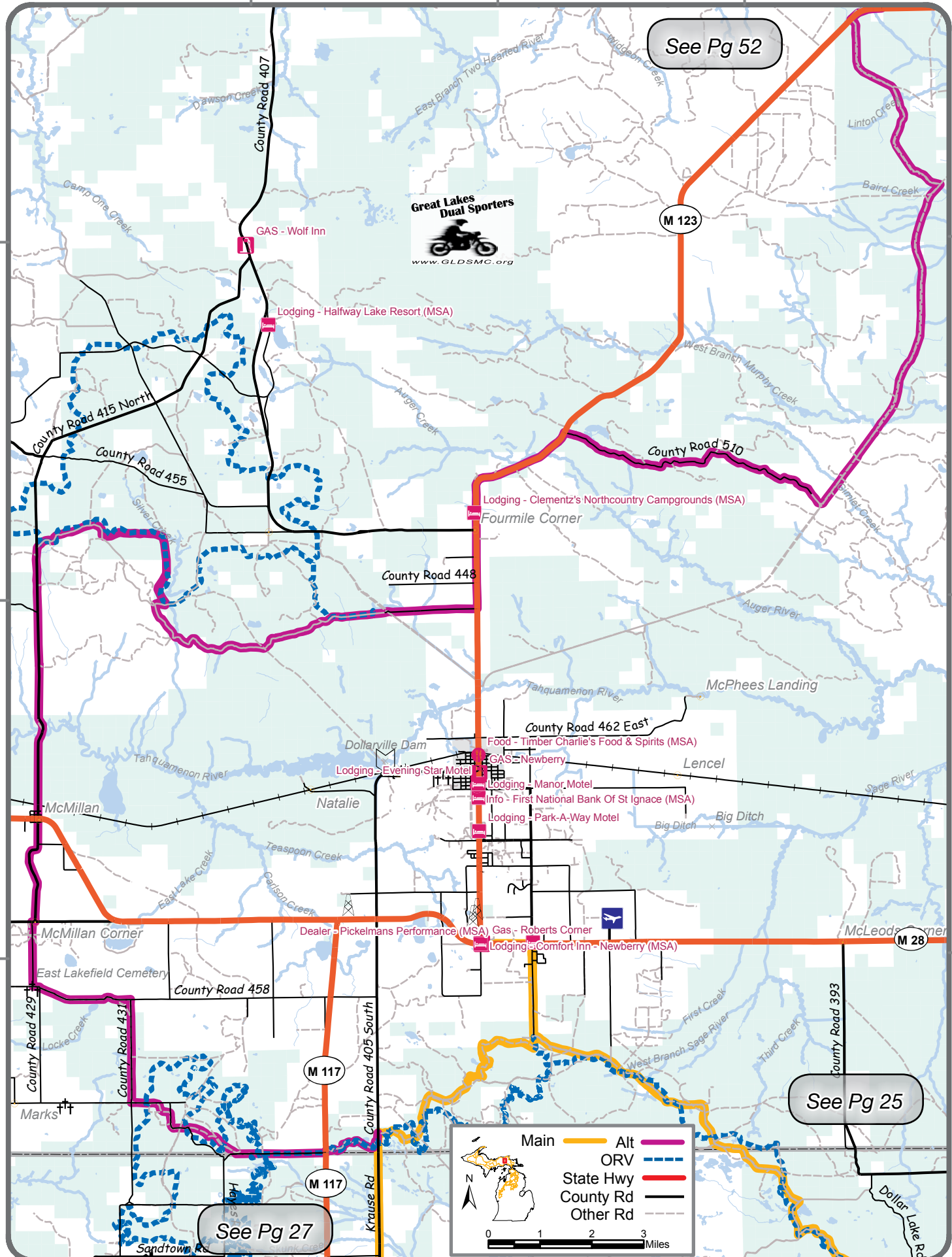
46.5° N

46.4° N

46.4° N

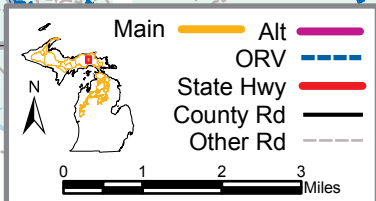
46.3° N

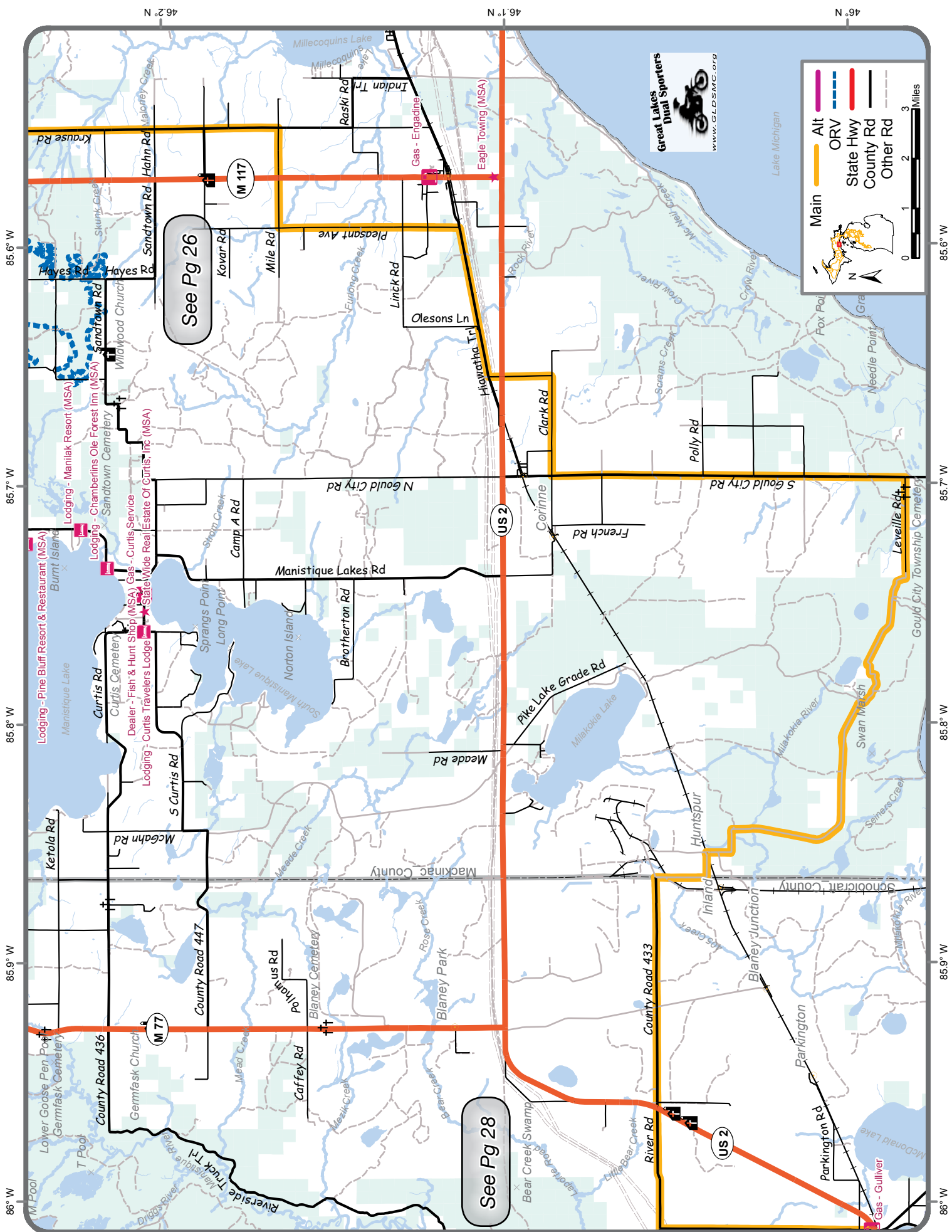
46.3° N



See Pg 27

See Pg 25





Great Lakes Dual Sporters
www.GLDSMC.org

Legend:

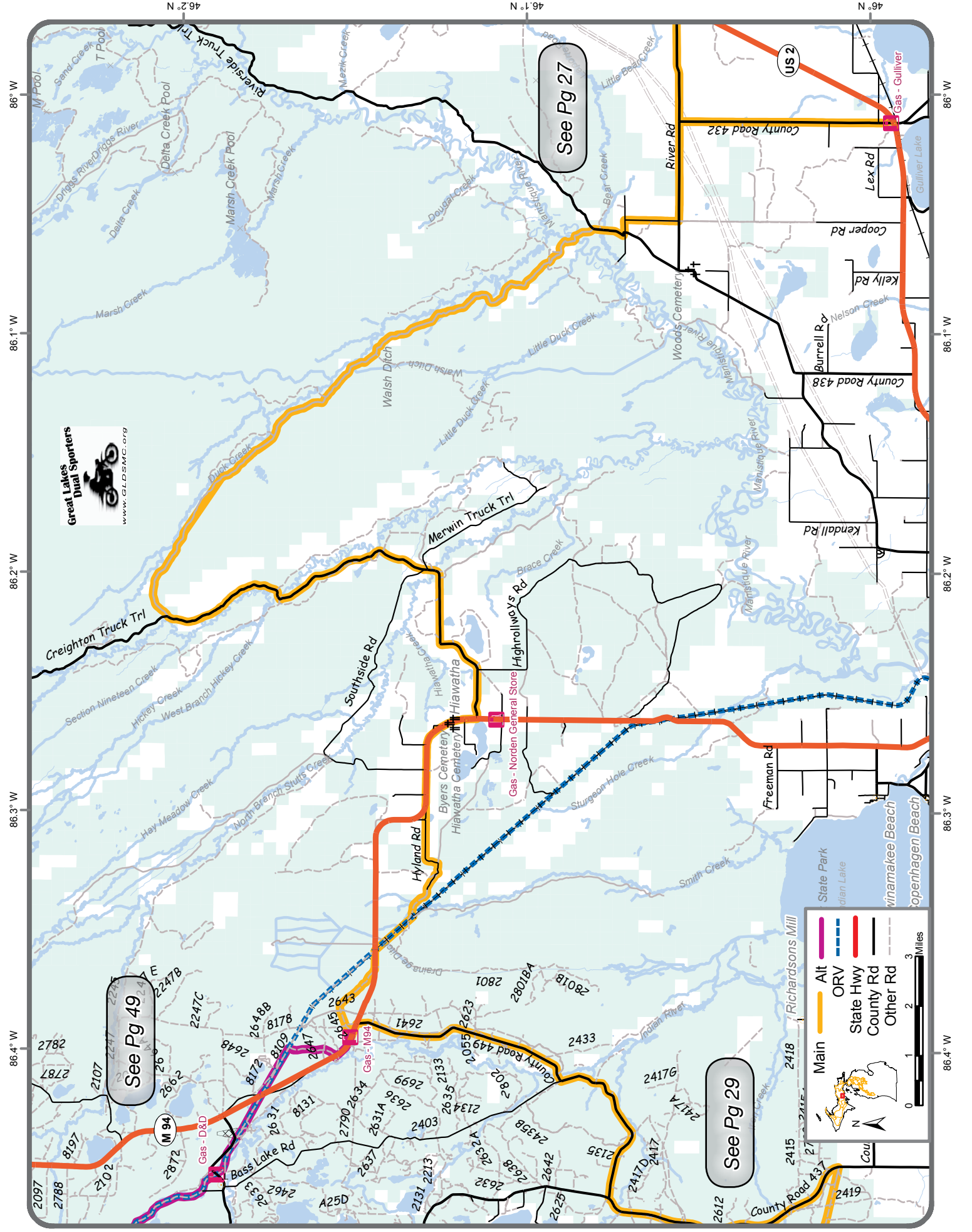
- Main (Yellow line)
- Alt (Orange line)
- ORV (Blue line)
- State Hwy (Red line)
- County Rd (Black line)
- Other Rd (Grey line)

Scale: 0, 1, 2, 3 Miles

Inset Map: Shows Michigan with the map area highlighted in yellow.

See Pg 26

See Pg 28



See Pg 27

See Pg 49

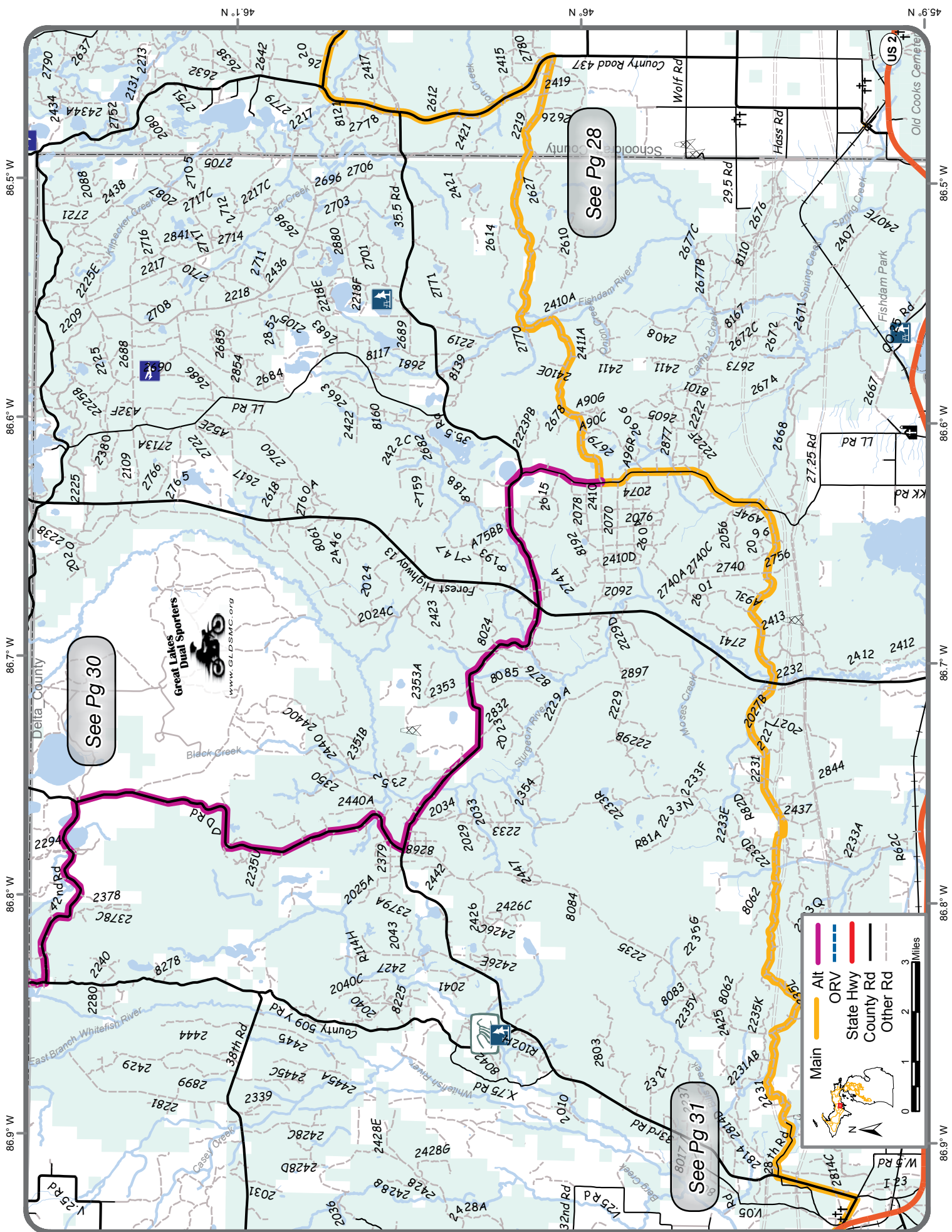
See Pg 29

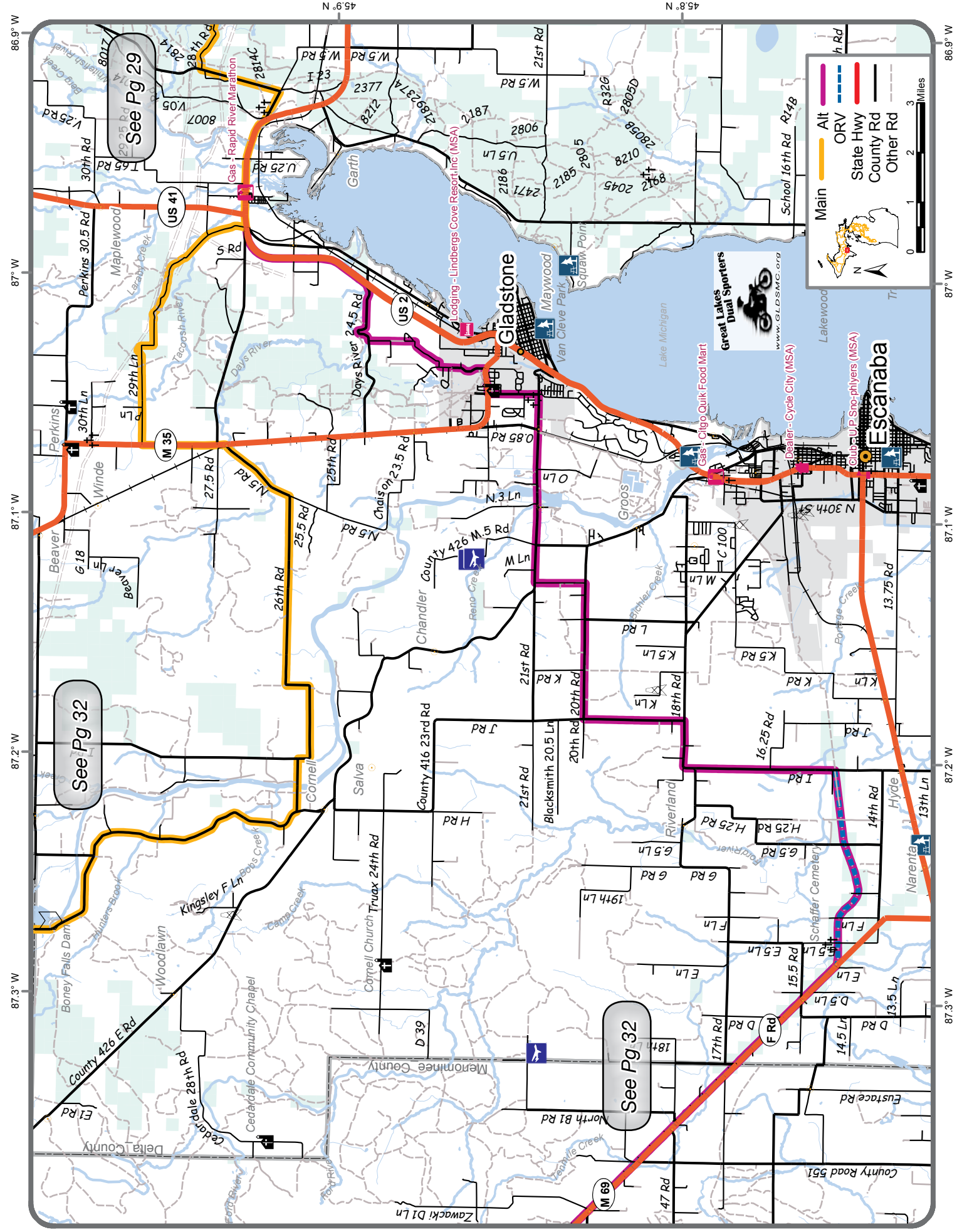
Legend:

- Main
- Alt
- ORV
- State Hwy
- County Rd
- Other Rd

Scale: 0 1 2 3 Miles

Inset Map: Michigan with a red box indicating the map's location.





87.6° W

87.5° W

87.4° W

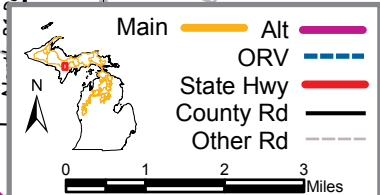
87.3° W

See Pg 47



See Pg 33

See Pg 31



46.1° N

46.1° N

46° N

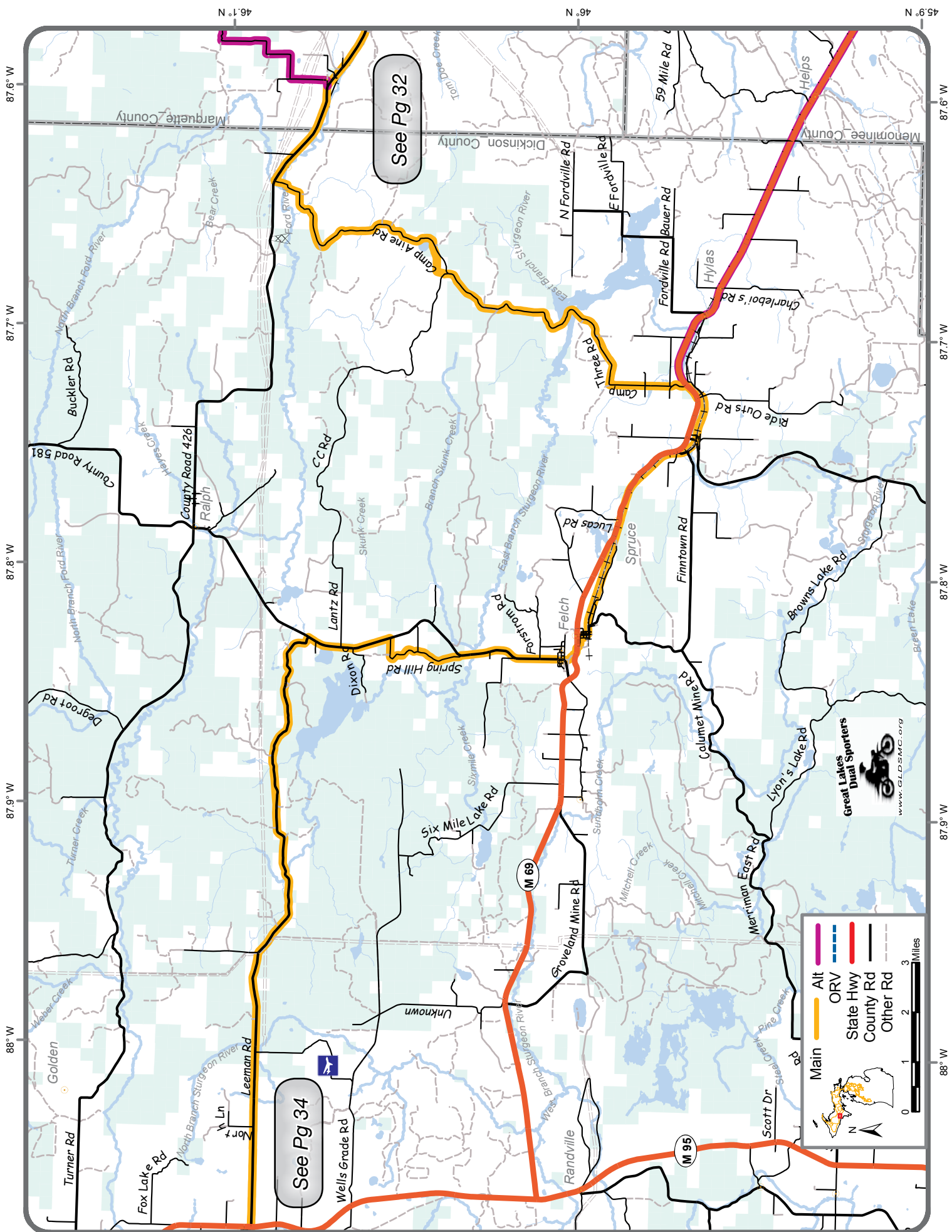
46° N

45.9° N

45.9° N

45.8° N

45.8° N



See Pg 32

See Pg 34

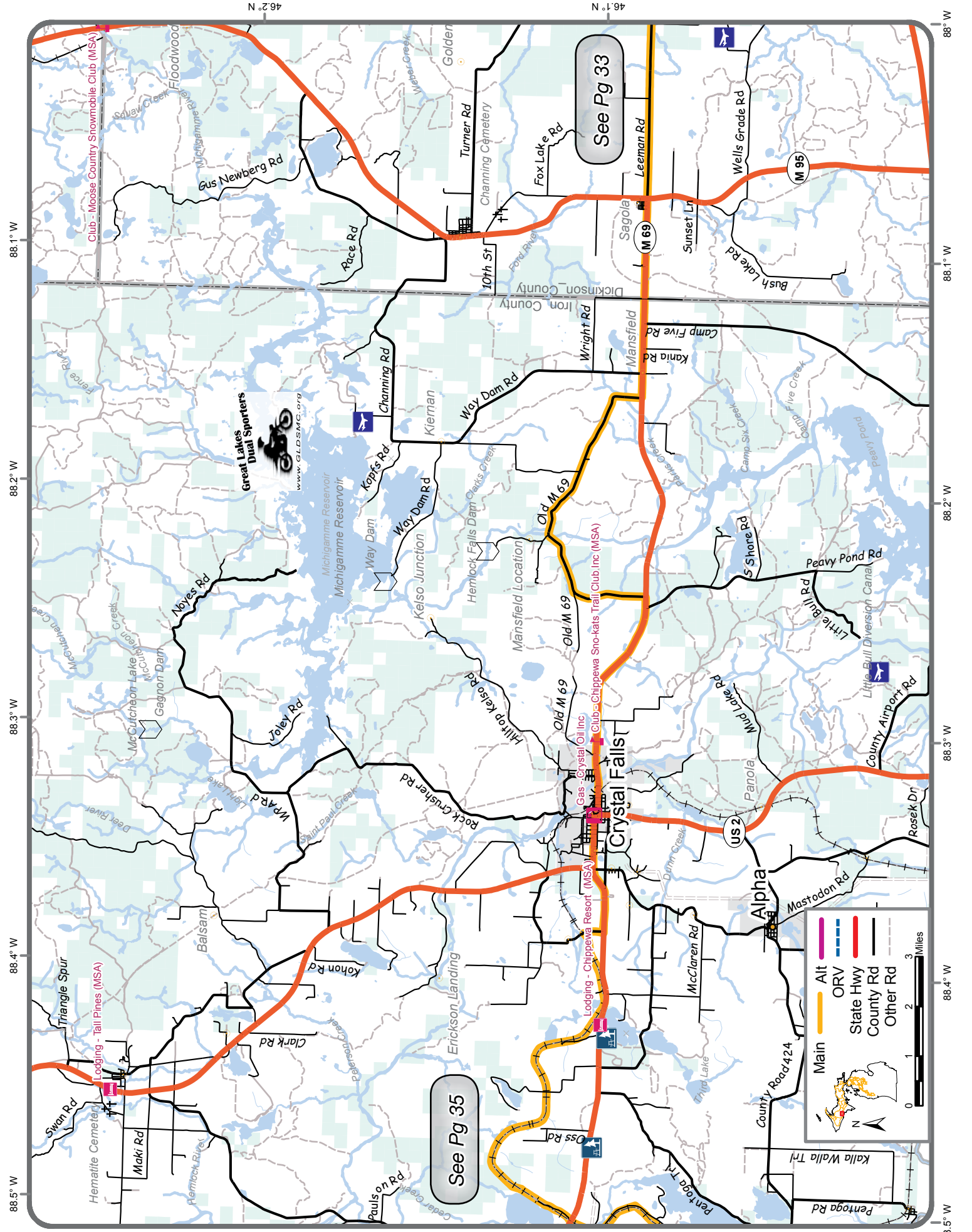
Legend

- Main (Yellow line)
- Alt (Pink line)
- ORV (Blue dashed line)
- State Hwy (Red line)
- County Rd (Black line)
- Other Rd (Grey line)

Scale
0 1 2 3 Miles

Inset Map
N

Great Lakes Dual Sporters
www.GLDSMC.org



88.5° W 88.4° W 88.3° W 88.2° W 88.1° W

88.5° W 88.4° W 88.3° W 88.2° W 88.1° W

46.2° N

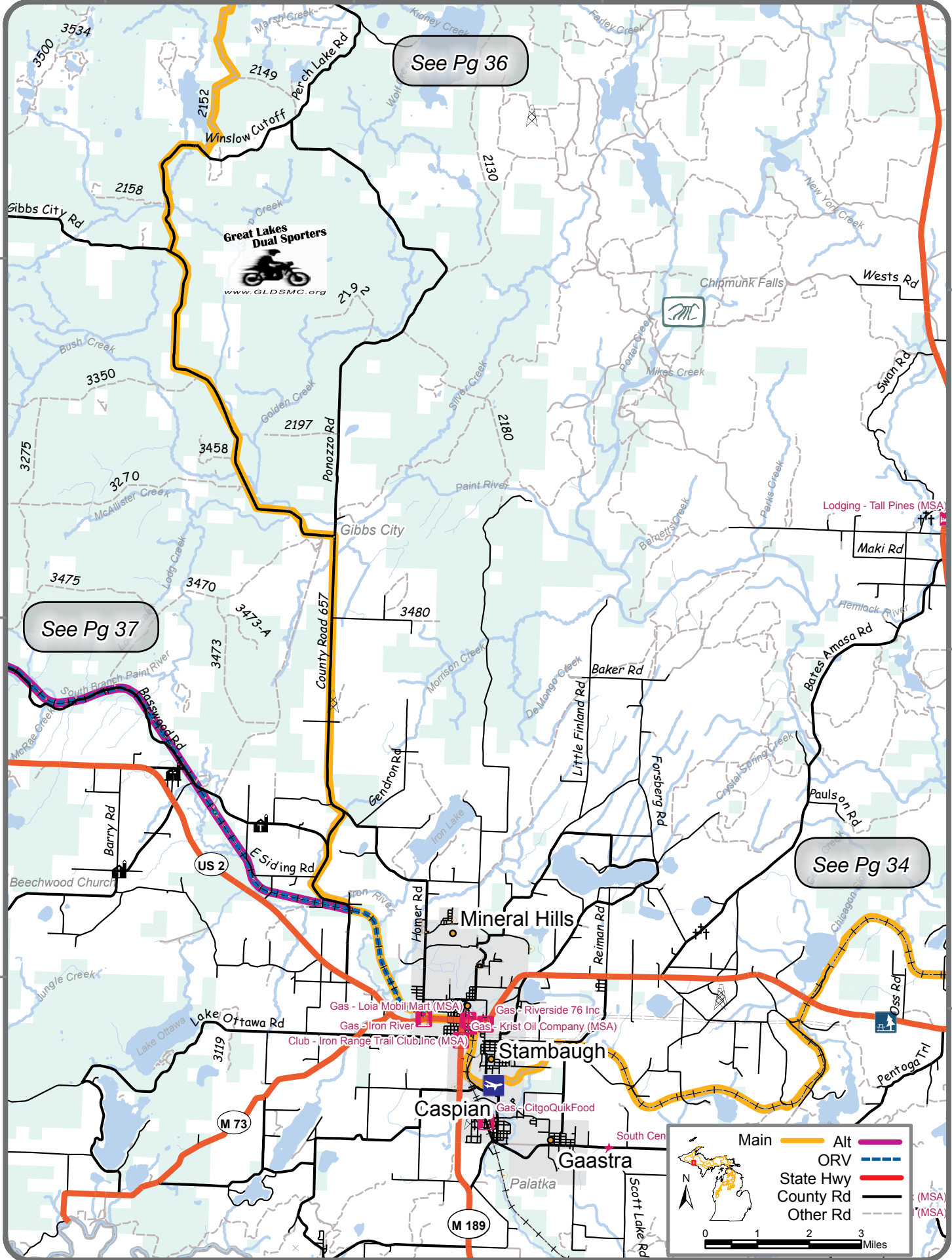
46.1° N

88° W

See Pg 36

See Pg 37

See Pg 34



89° W

88.9° W

88.8° W

88.7° W

46.7° N

See Pg 40

See Pg 44

Great Lakes Dual Sporters
www.GLDSMC.org



Main — Alt — ORV — State Hwy — County Rd — Other Rd

0 1 2 3 Miles

See Pg 35

46.6° N

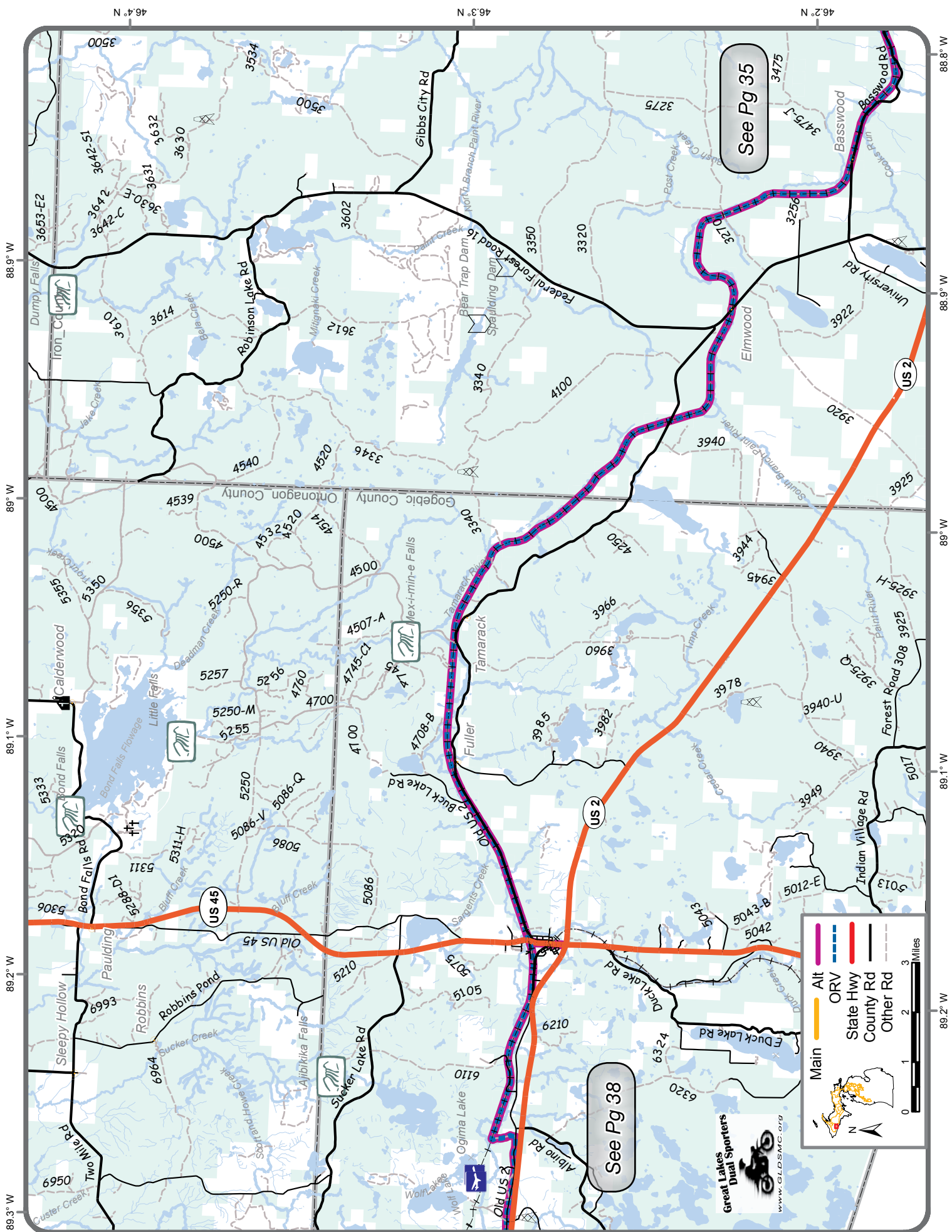
46.5° N

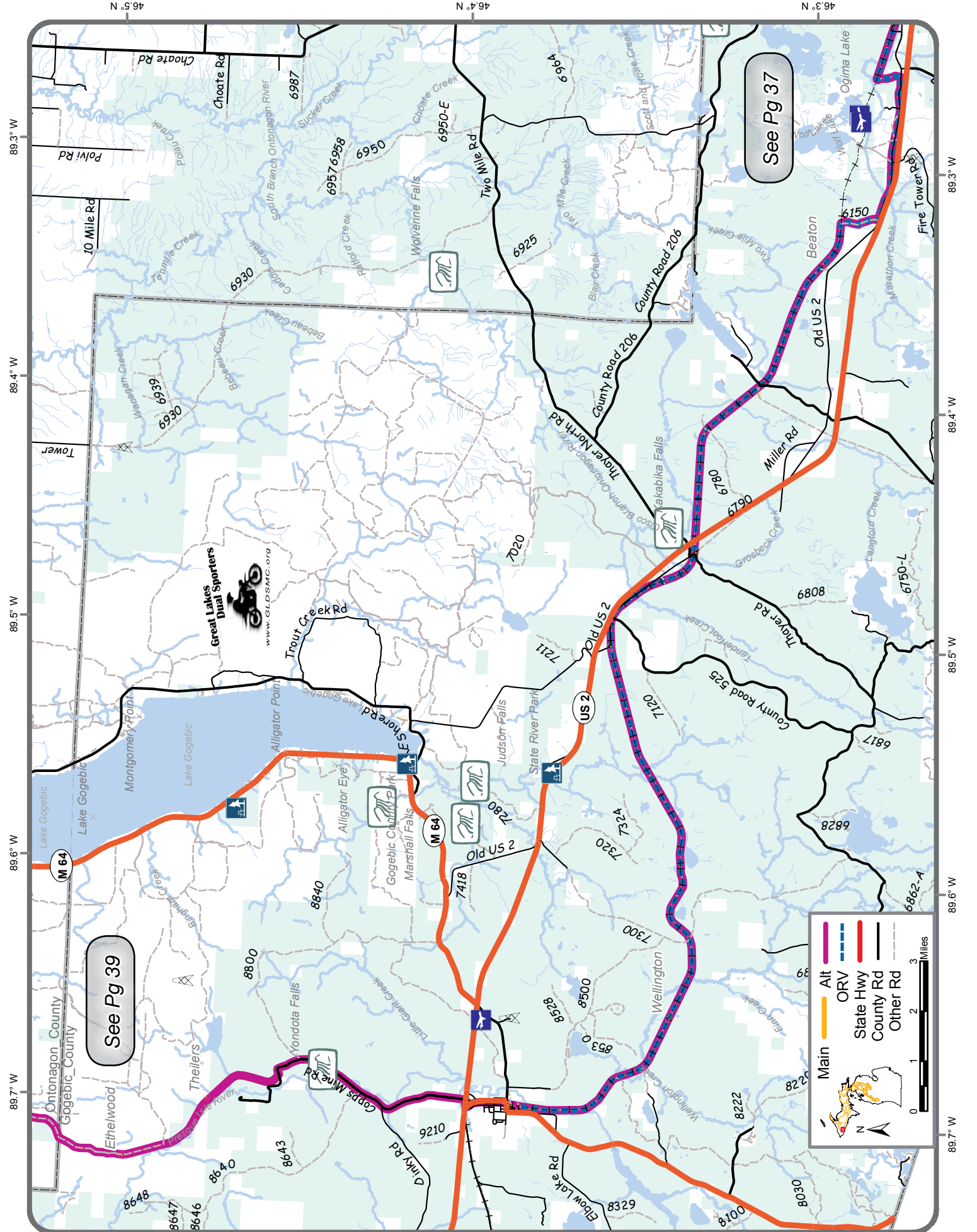
46.4° N

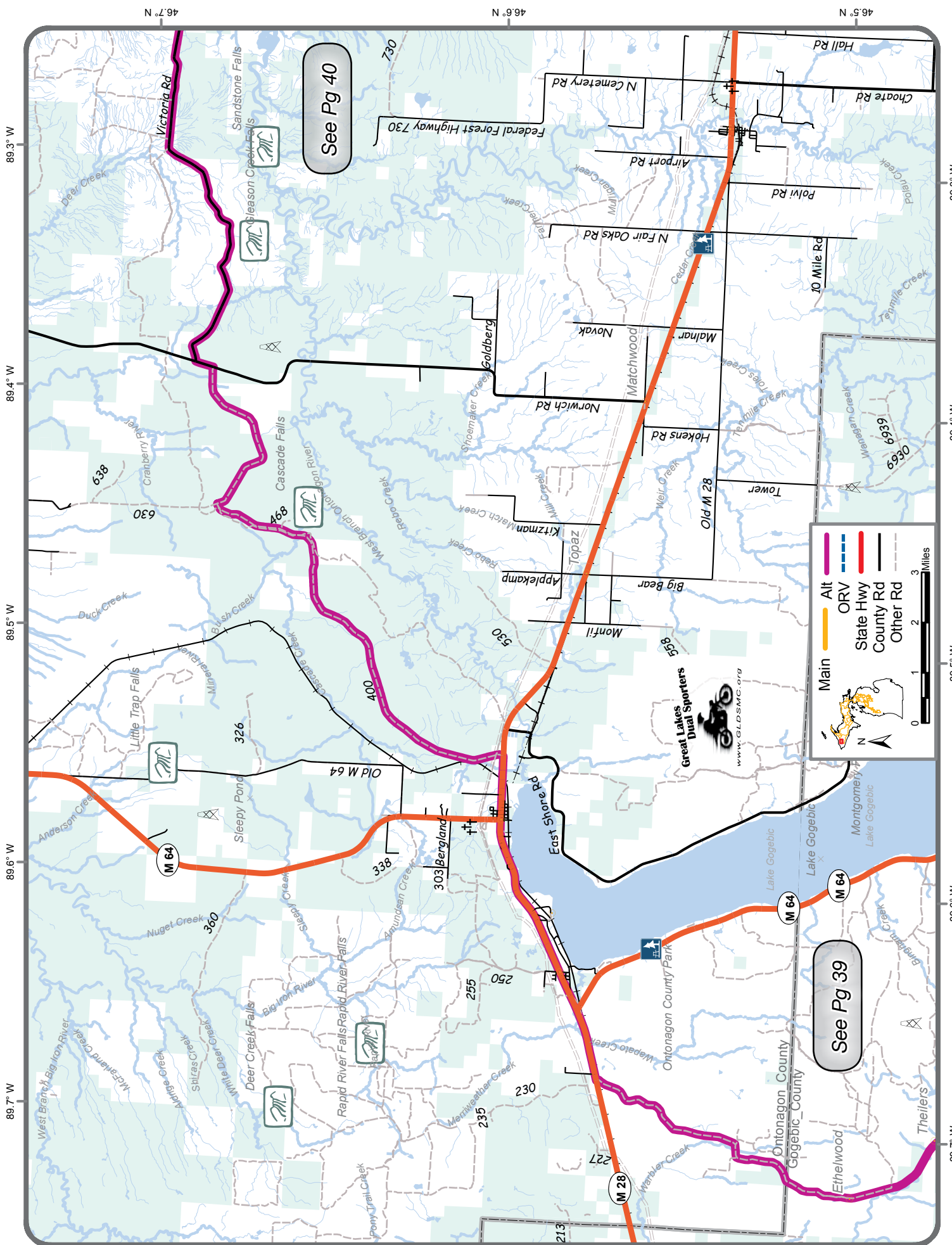
46.6° N

46.5° N

46.4° N







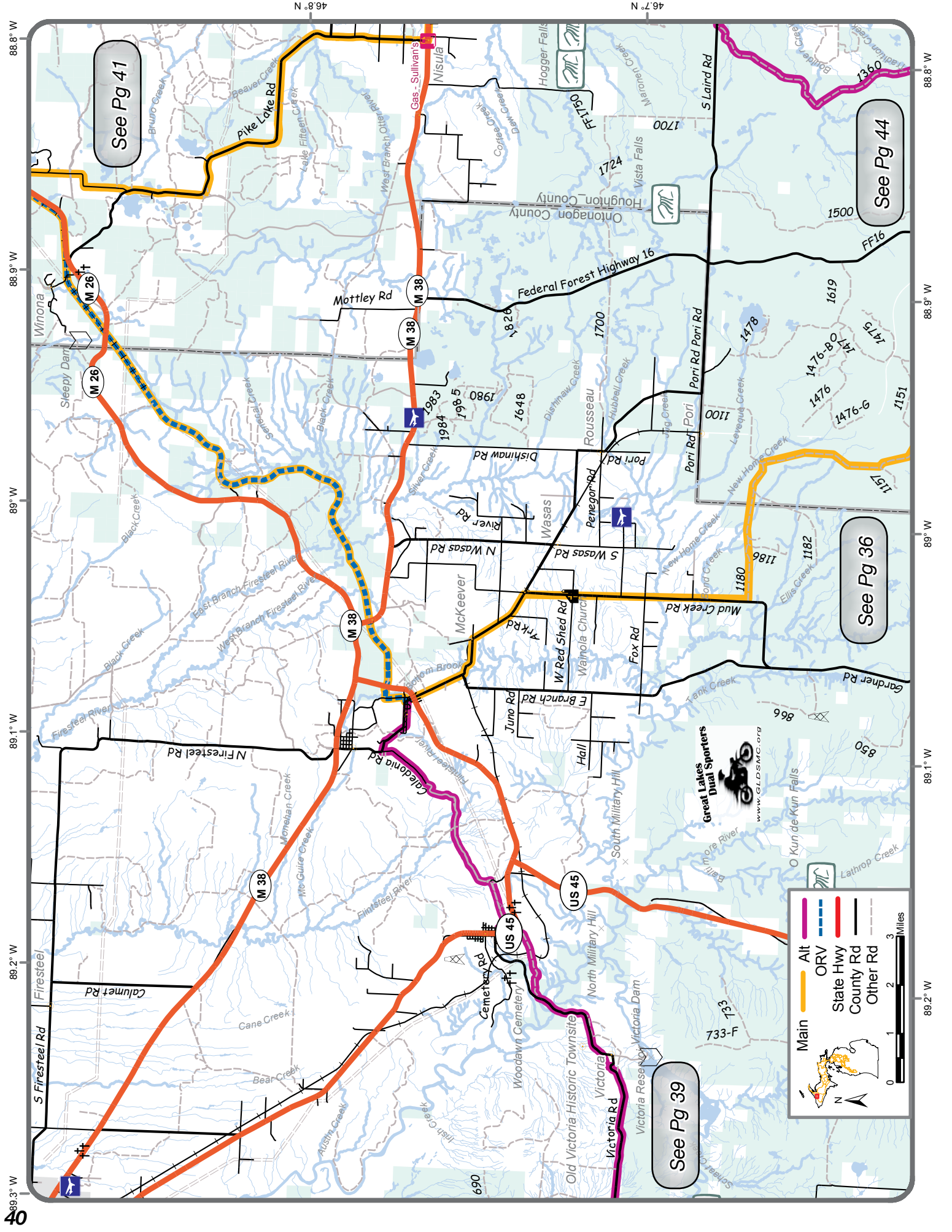
See Pg 40

See Pg 39

— Main
— Alt
— ORV
— State Hwy
— County Rd
- - - Other Rd

0 1 2 3 Miles

Great Lakes Dual Sporters
 www.GLDSMC.org



See Pg 41

See Pg 44

See Pg 36

See Pg 39

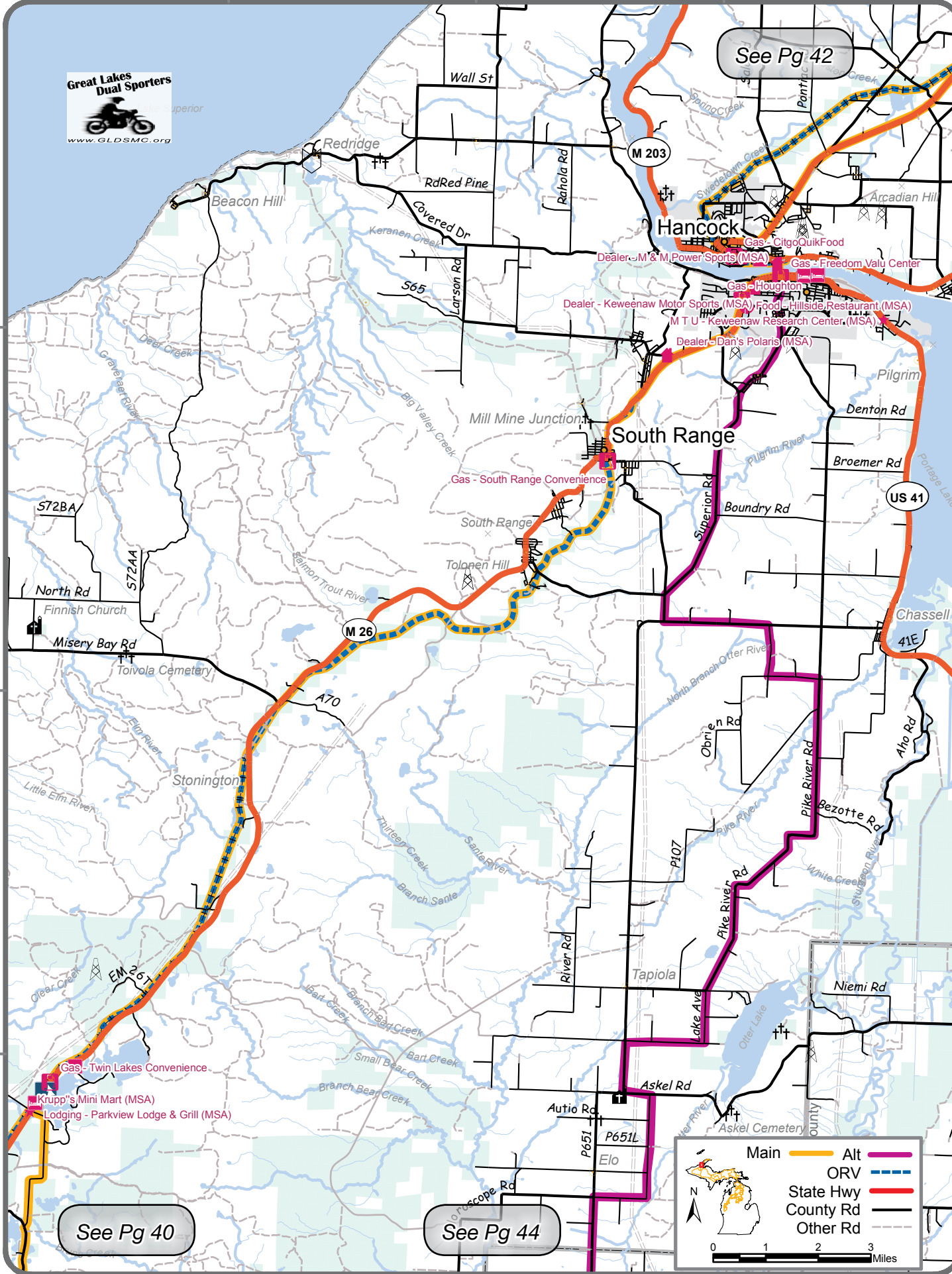


Great Lakes Dual Sporters



www.GLDSMC.org

See Pg 42



See Pg 40

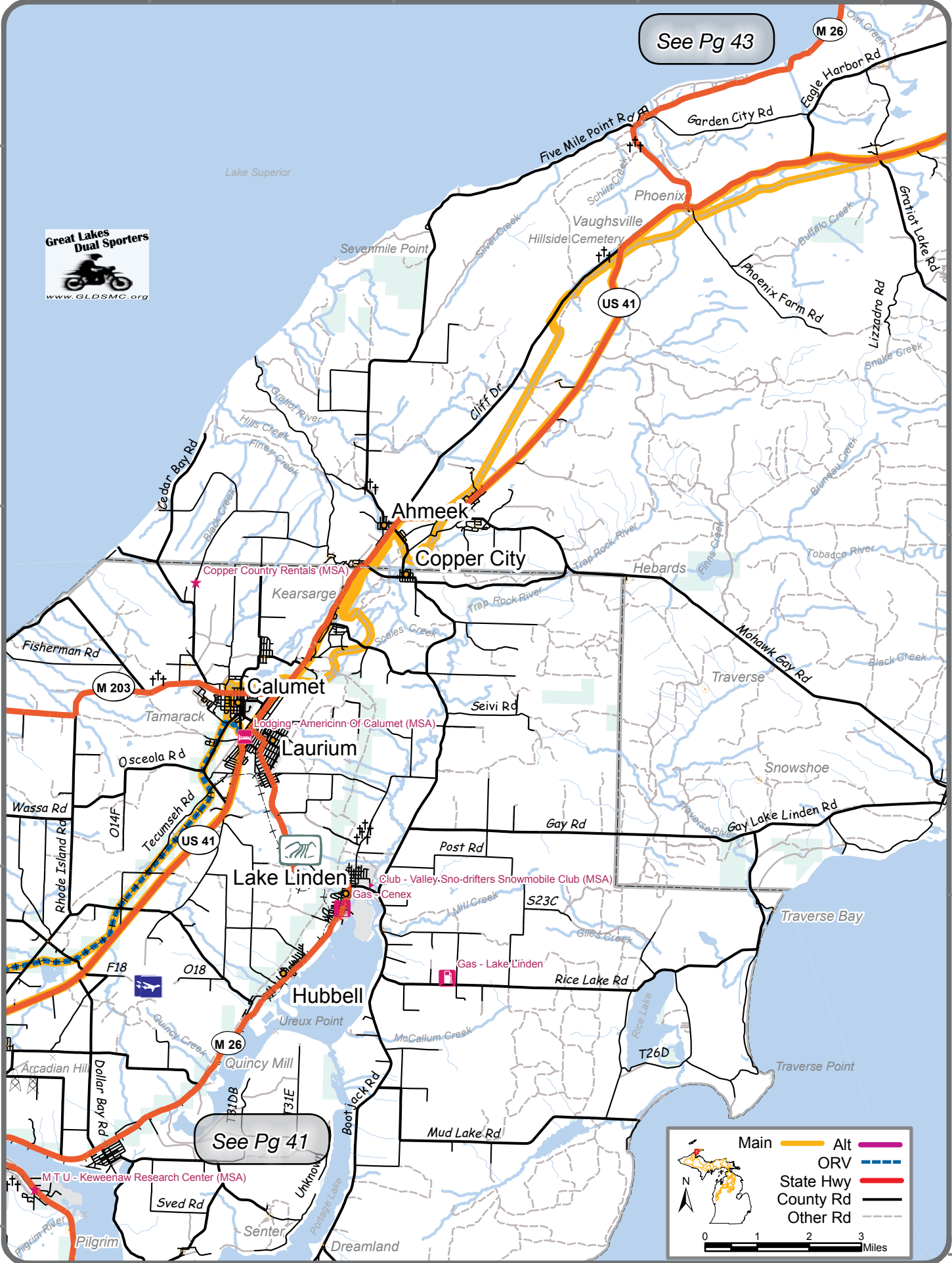
See Pg 44

Main ——— Alt ———
 ORV ———
 State Hwy ———
 County Rd ———
 Other Rd ———

0 1 2 3 Miles

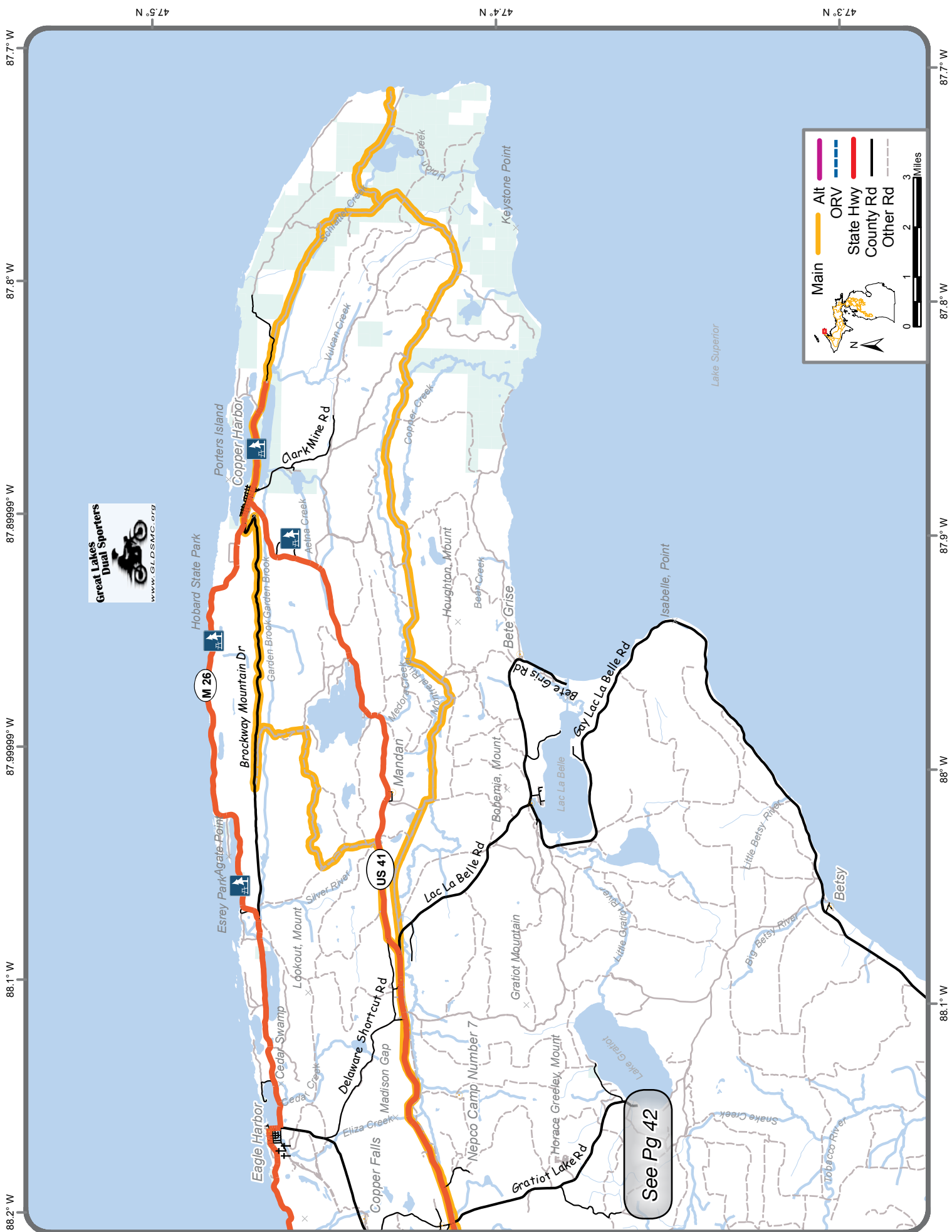
See Pg 43

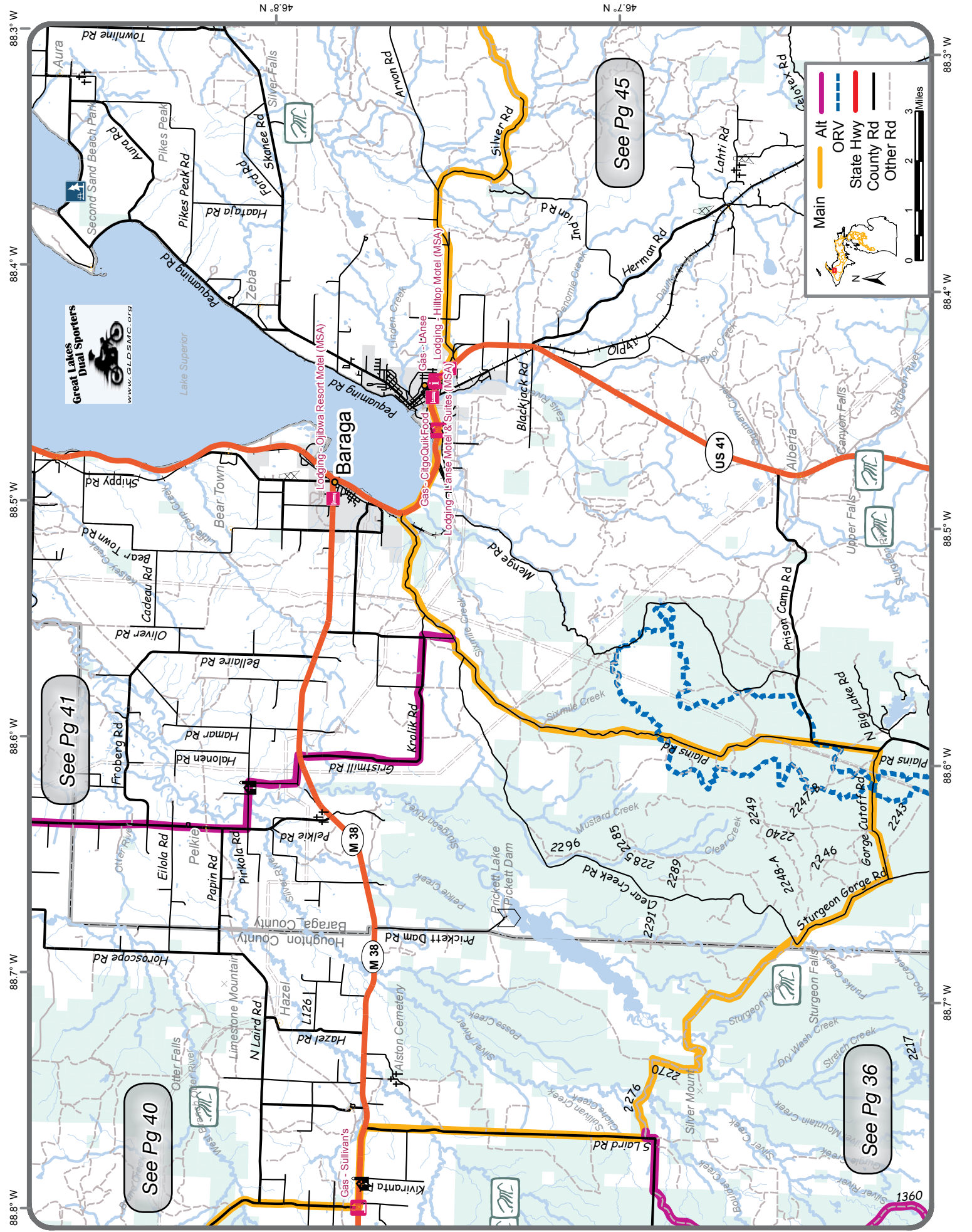
See Pg 41



Main ————
 Alt ————
 ORV ————
 State Hwy ————
 County Rd ————
 Other Rd ————

0 1 2 3 Miles





88.3° W

88.2° W

88.1° W

88° W

46.8° N

46.7° N

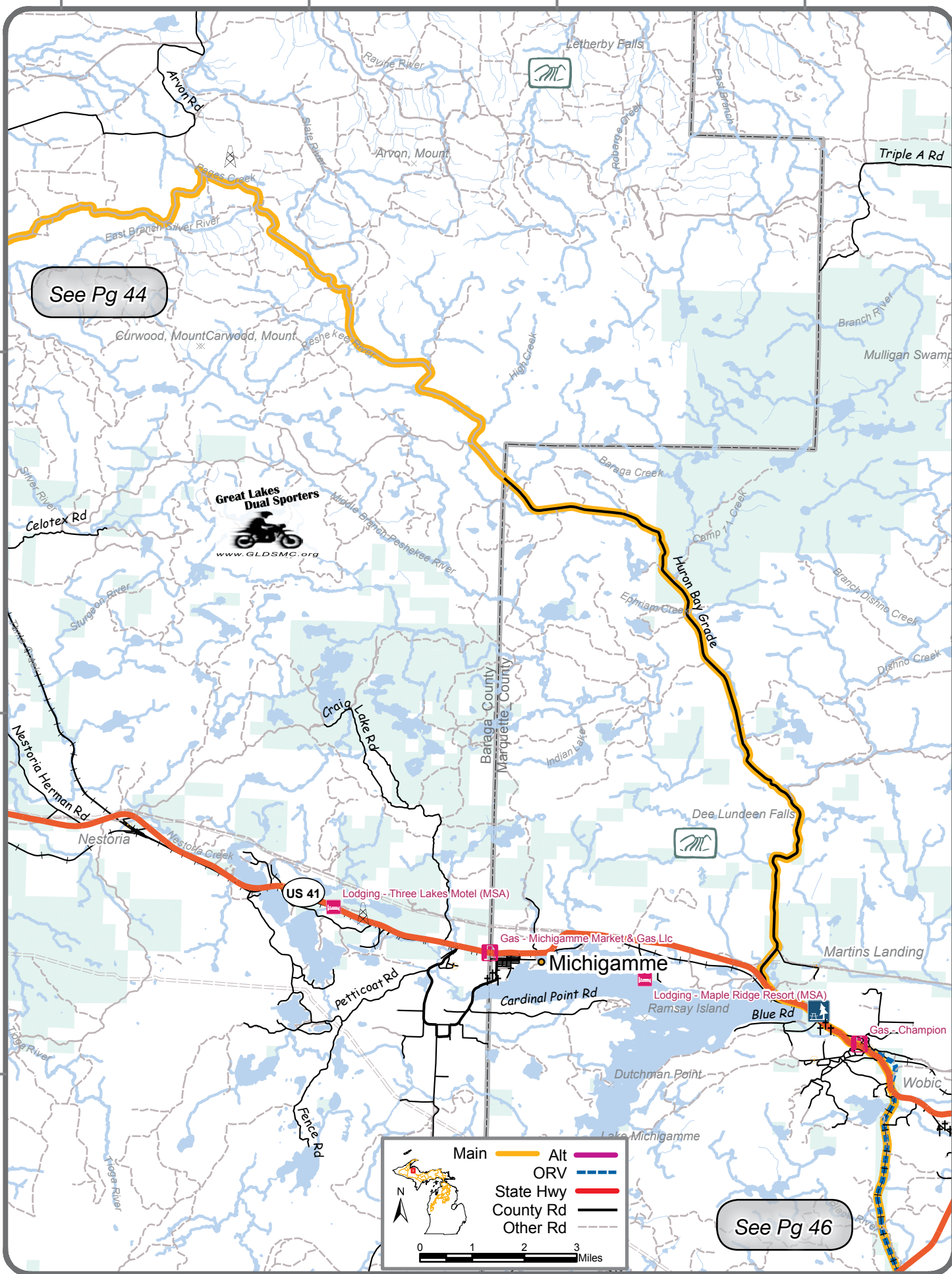
46.6° N

46.5° N

46.7° N

46.6° N

46.5° N



See Pg 44



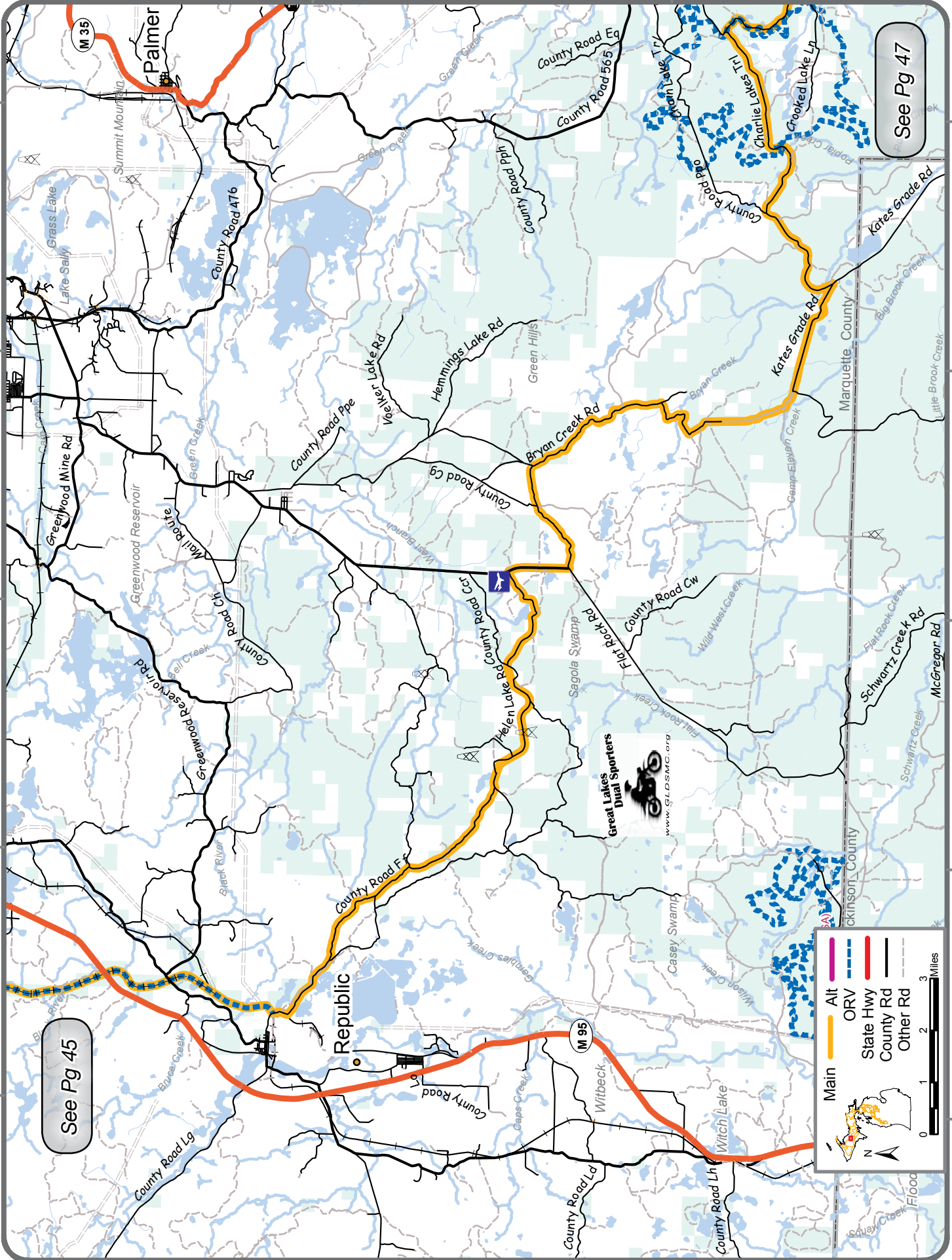
See Pg 46

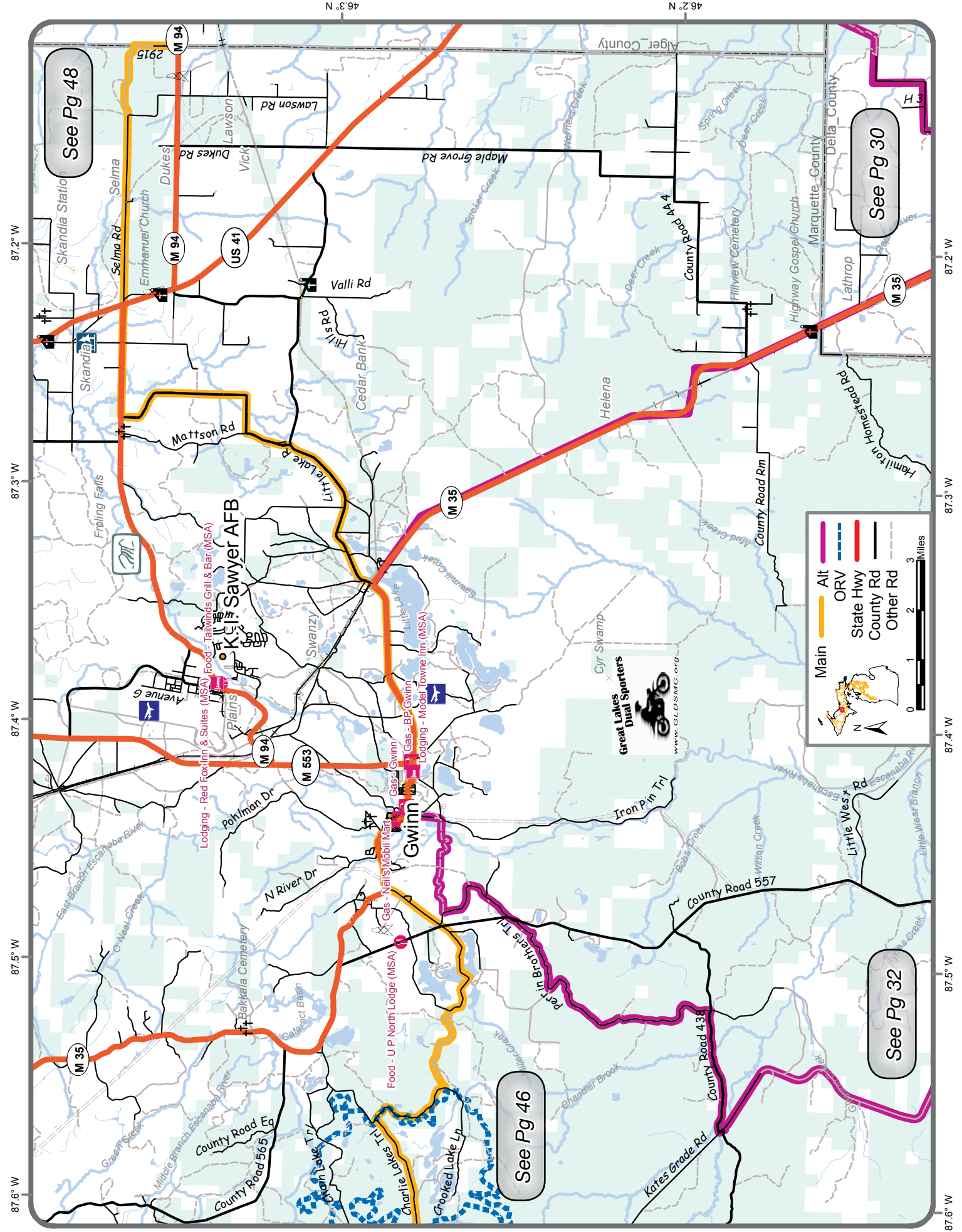
Main ——— Yellow line
 Alt ——— Purple line
 ORV ——— Blue dashed line
 State Hwy ——— Red line
 County Rd ——— Black line
 Other Rd ——— Grey dashed line

0 1 2 3 Miles

See Pg 47

See Pg 45



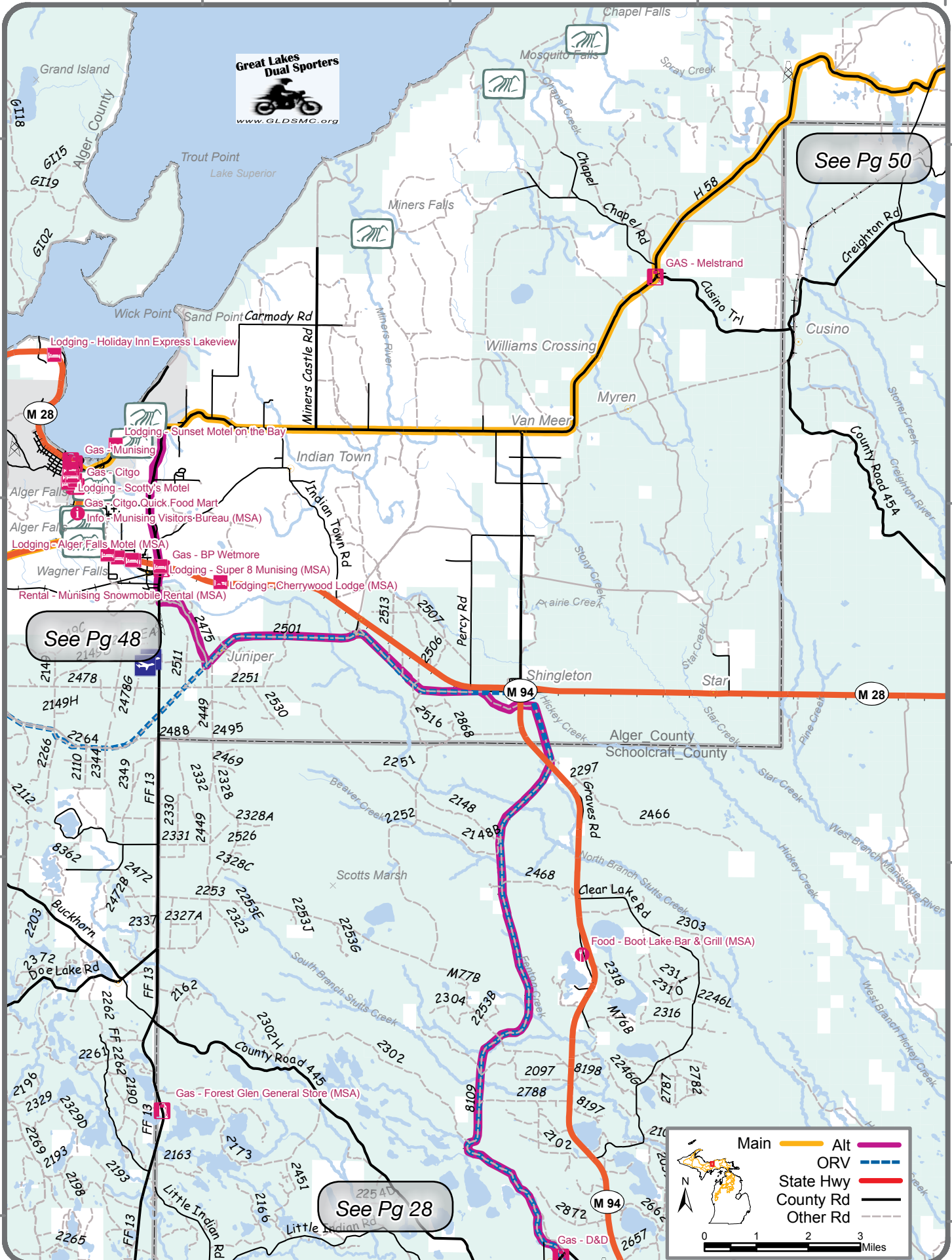




See Pg 50

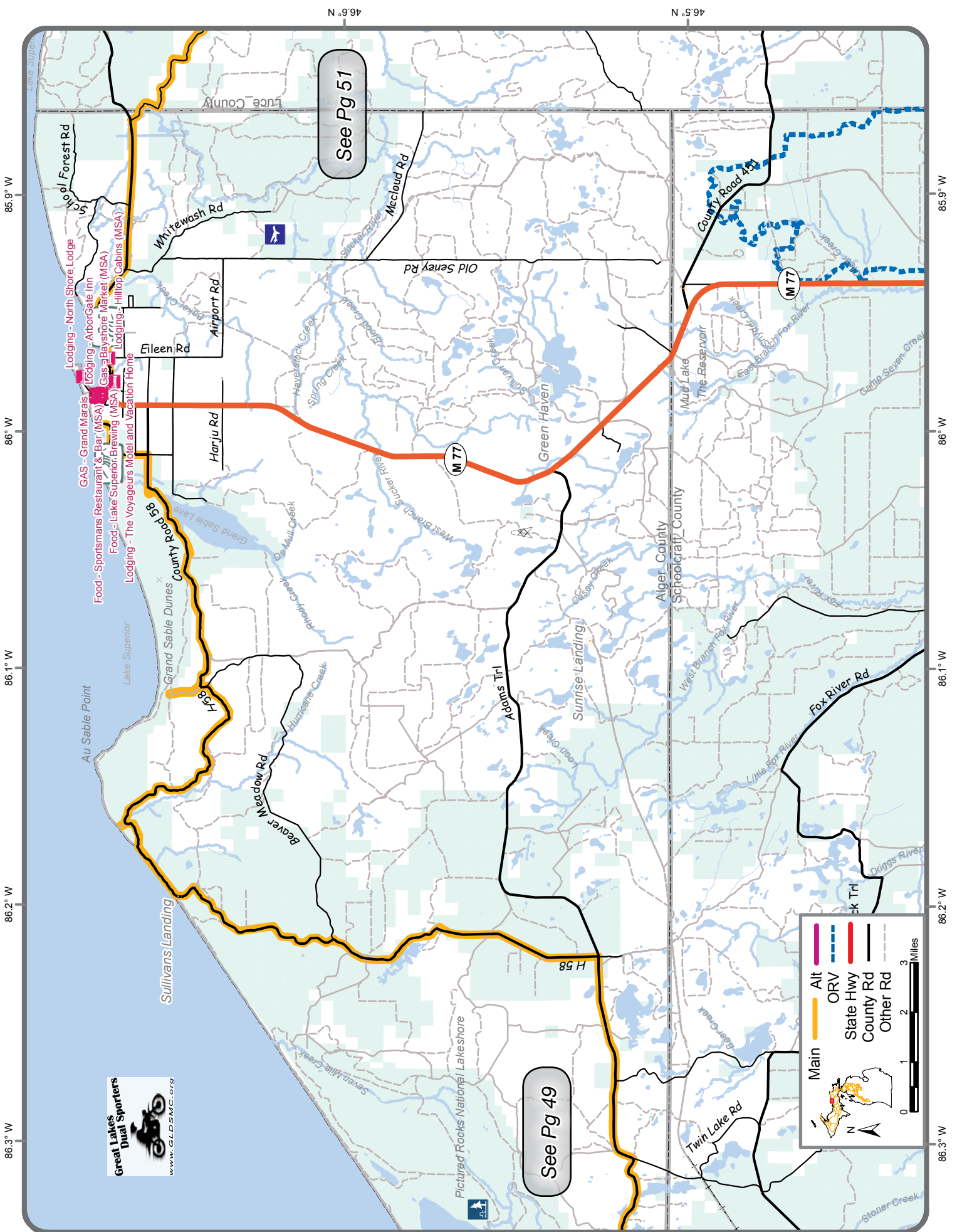
See Pg 48

See Pg 28



Main — Alt —
 ORV - - -
 State Hwy —
 County Rd —
 Other Rd - - -

0 1 2 3 Miles



See Pg 51

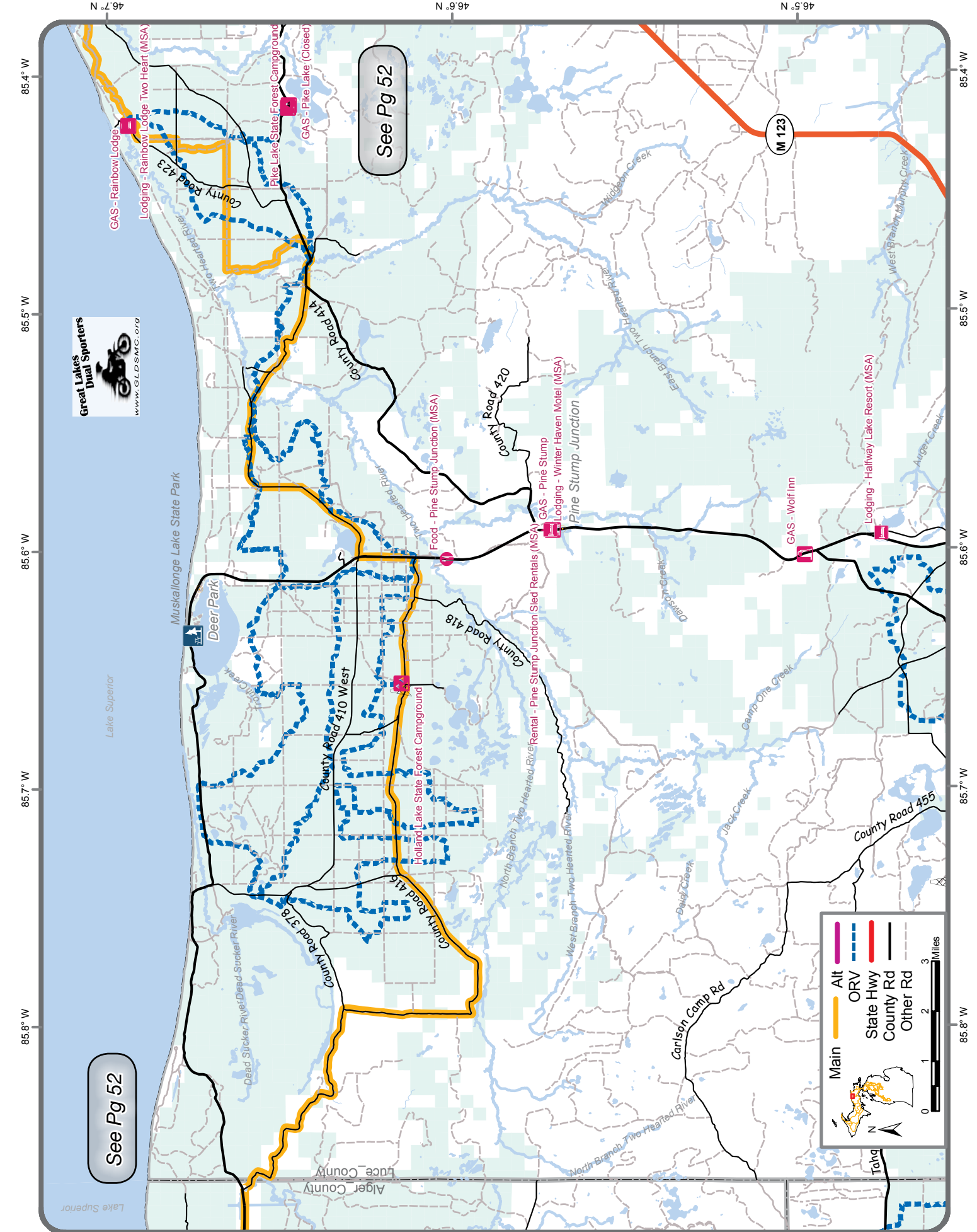
See Pg 49

Legend:

- Main (Yellow line)
- Alt (Red line)
- ORV (Blue dashed line)
- State Hwy (Thick orange line)
- County Rd (Thin black line)
- Other Rd (Dashed black line)

Scale: 0, 1, 2, 3 Miles

Inset Map of Michigan showing the location of the study area.



See Pg 52

See Pg 52



Legend:

- Main (Yellow line)
- Alt (Orange line)
- ORV (Blue dashed line)
- State Hwy (Red line)
- County Rd (Black line)
- Other Rd (Grey line)

Scale: 0 to 3 Miles

Inset Map of Michigan showing the location of the study area in the western part of the state.

Main

- Alt
- ORV
- State Hwy
- County Rd
- Other Rd

0 1 2 3 Miles



46.7° N

46.6° N

85° W

85.1° W

85.2° W

85.3° W

85.4° W

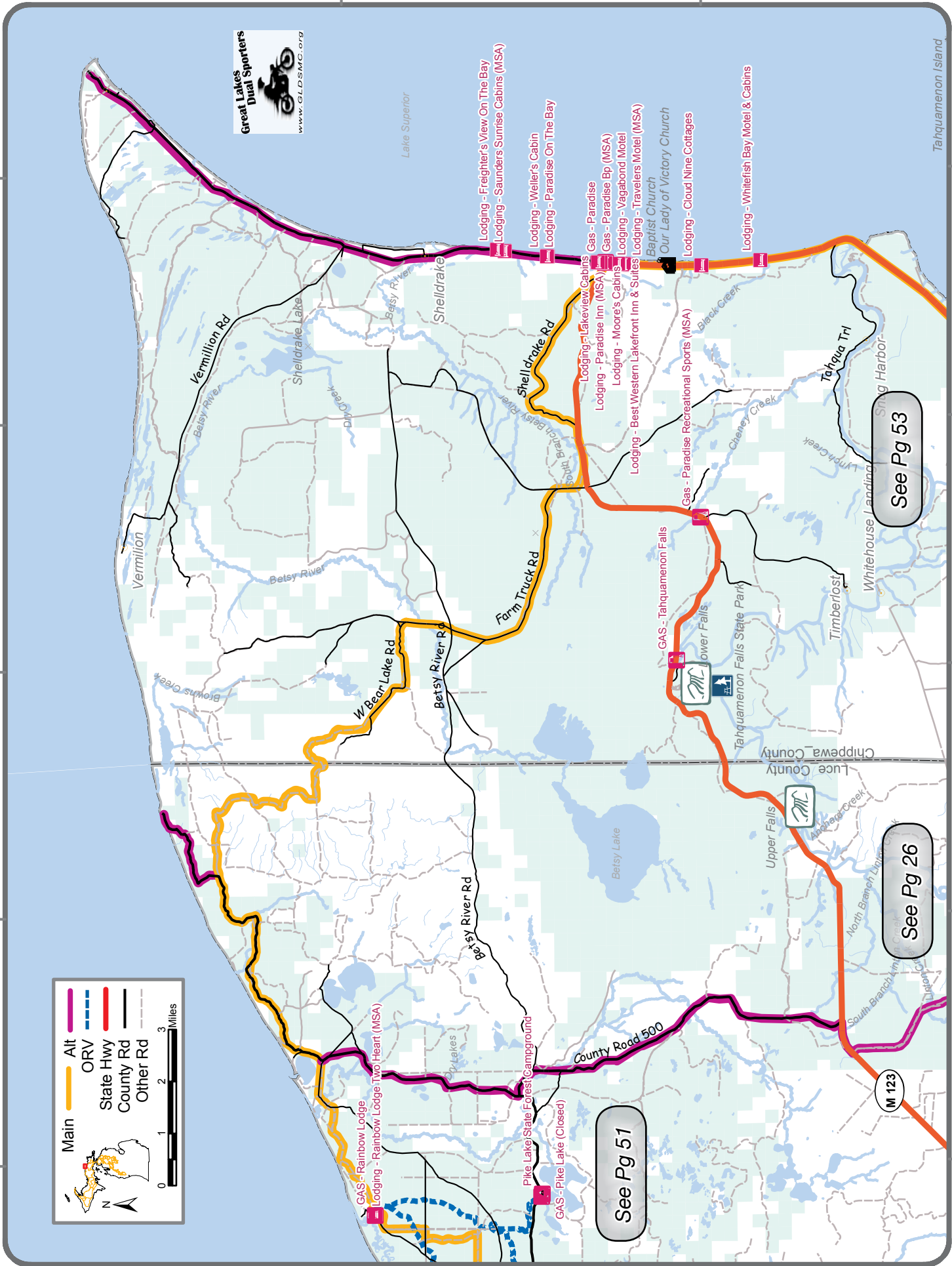
85° W

85.1° W

85.2° W

85.3° W

85.4° W



See Pg 53

See Pg 26

See Pg 51

Tahquamenon Island

Lake Superior

Vermillion

Vermillion Rd

Shell Drake Lake

Shell Drake Rd

Shell Drake

Lodging - Freighter's View On The Bay

Lodging - Saunders Sunrise Cabins (MSA)

Lodging - Weller's Cabin

Lodging - Paradise On The Bay

Gas - Paradise

Gas - Paradise Bq (MSA)

Lodging - Vagabond Motel

Lodging - Travelers Motel (MSA)

Baptist Church

Our Lady of Victory Church

Lodging - Cloud Nine Cottages

Lodging - Whitefish Bay Motel & Cabins

Betsy River

W Bear Lake Rd

Betsy River Rd

Farm Truck Rd

Shell Drake Betsy River

Lodging - Lakeview Cabins

Lodging - Paradise Inn (MSA)

Lodging - Moore's Cabins

Lodging - Best Western Lakefront Inn & Suites

Gas - Paradise Recreational Sports (MSA)

Gas - Tahquamenon Falls

Lower Falls

Tahquamenon Falls State Park

Timberlost

Whitehouse Landing

Shing Harbor

Chippewa County

Luce County

Upper Falls

North Branch Lake

South Branch Lake

County Road 500

M 123

See Pg 52

Lodging - Whitefish Bay Motel & Cabins

Great Lakes Dual Sporters



www.GLDSMC.org

46.5° N

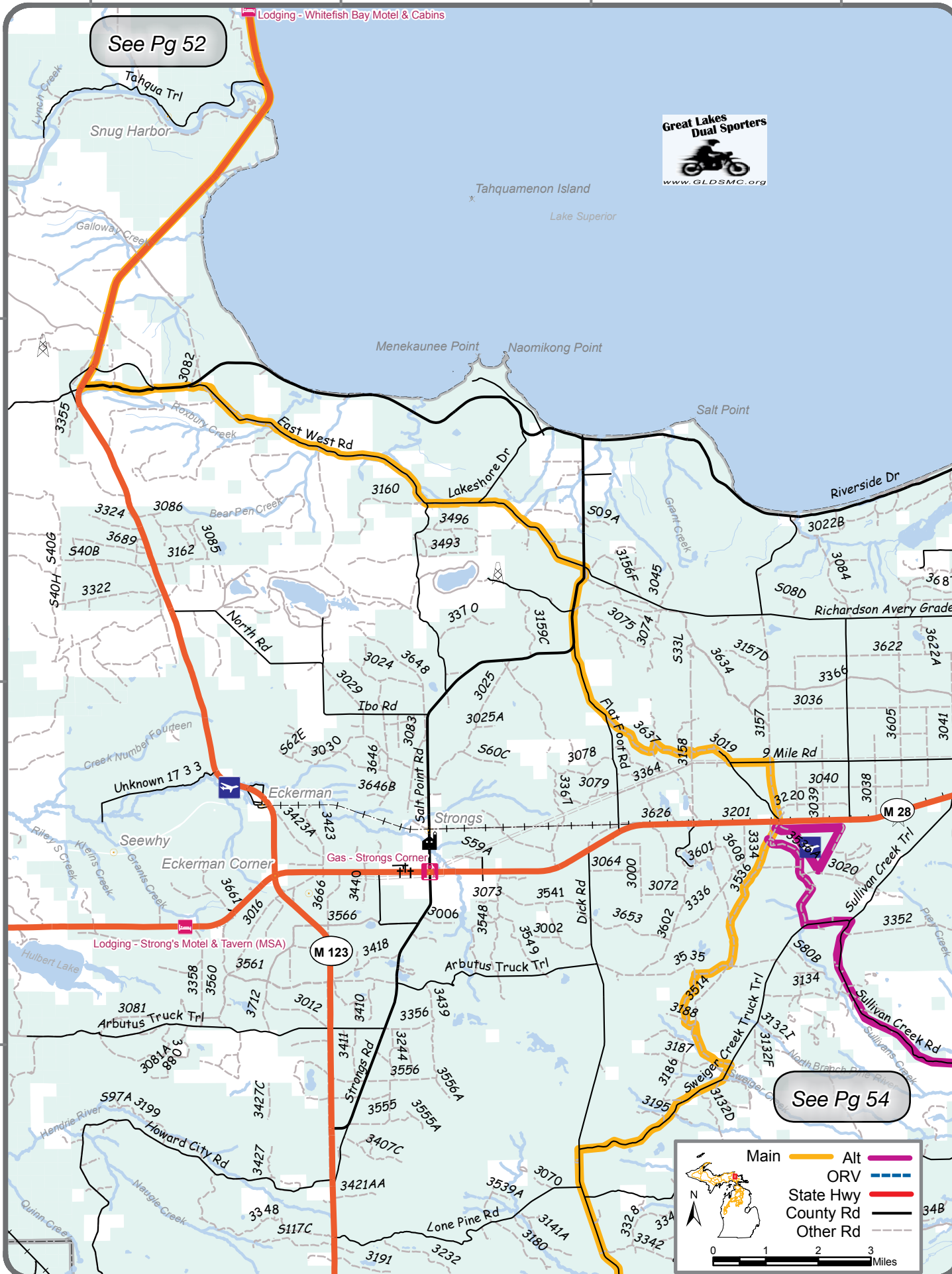
46.5° N

46.4° N

46.4° N

46.3° N

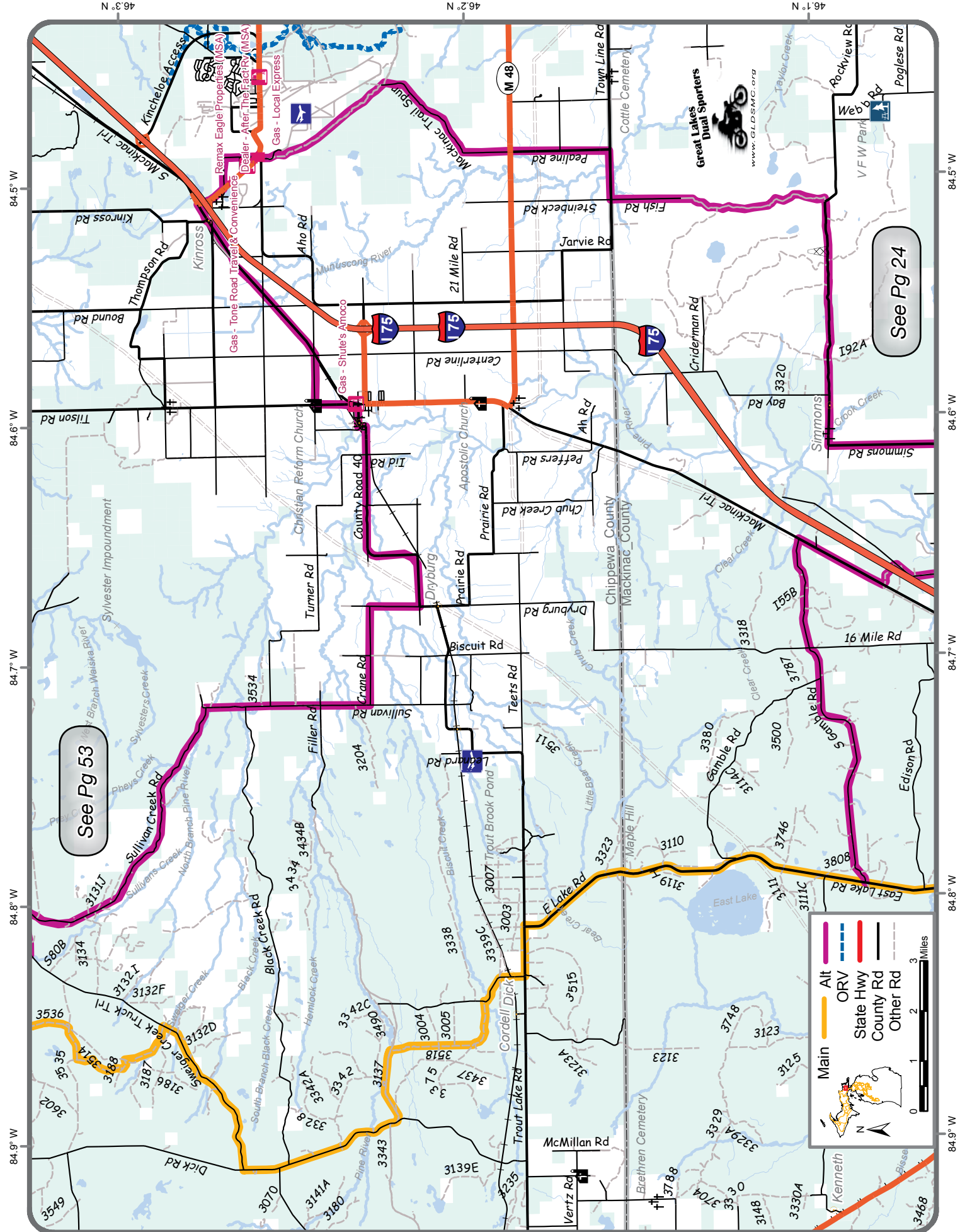
46.3° N



See Pg 54

Main — Alt —
 ORV - - -
 State Hwy —
 County Rd —
 Other Rd — 34B

0 1 2 3 Miles



See Pg 53

See Pg 24

— Main
— Alt
— ORV
— State Hwy
— County Rd
— Other Rd

0 1 2 3 Miles